



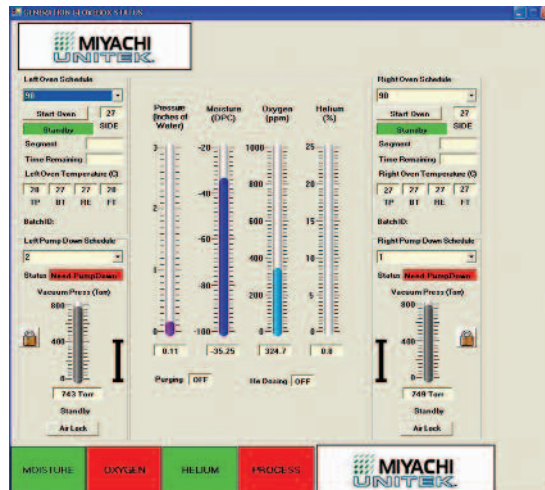
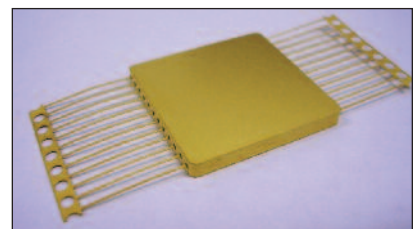
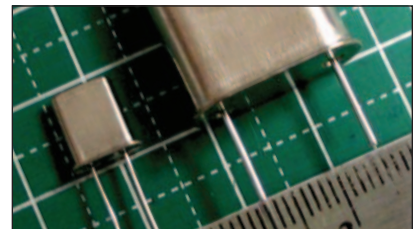
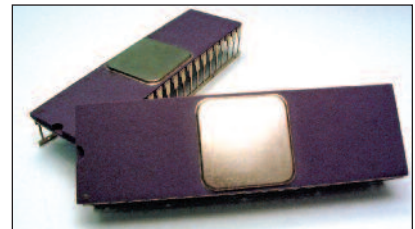
# AX5000 Glovebox

The AX5000 is an ideal glovebox system for the precise control of moisture, pressure and gas composition of a processing environment. It provides fully-integrated computer control of the system including enclosure pressure, interior and exterior doors, gas and moisture analysis and control instrumentation, vacuum ovens, and antechambers. The glovebox can maintain an inert environment with ultra-low moisture and oxygen levels to meet the most demanding process standards.

## Key Features

- **Historical and real time graphical display** – Real time glovebox operating parameters, atmospheric conditions, status, glovebox data acquisition in csv format and oven bakeout batch reports.
- **Independent vacuum pumping systems on all ovens and antechambers** – Dedicated to completely and automatically evacuating designated chambers. Provides maximum package protection.
- **Wide variety of vacuum oven configurations** – Exclusive closed-loop computer control and monitoring of each oven surface, including heated shelves, ensures temperature stability. Meets diverse production flow and bakeout requirements.
- **Automatic push button inner and outer doors on ovens and antechambers** – Easy to operate.
- **Fully-integrated automatic electronic gas pressure control system** – User-selectable set points, includes oil-less check valve.
- **Integrated moisture, oxygen and helium gas analyzers** – Real-time environmental control. Set points can be selected to trigger alarms or inhibit processes. Digital output provided for interface to process equipment.

## typical applications





specifications and options

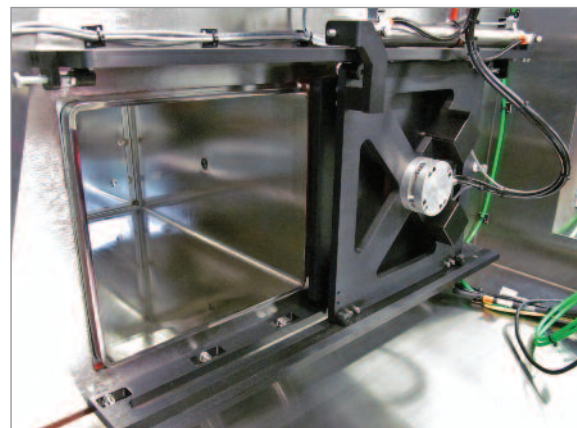
Antechambers and Ovens		Features
Configuration Options		End, front, rear loading
Heating		Wall heating or heated shelves
Temperature		0-200° C std., higher available
Vacuum Pumps		Rotary vane, dry, or turbo pumps
Analysis and Monitoring Capabilities		
Trace Oxygen Detection Range		0.0 - 1000 PPM
% Oxygen Detection Range		0.00 - 25.00%
Moisture Detection Range	GUI display -20.00 to -100 dewpoint°C or 0.00-1000 PPM (Sensor Range +20.00 to -100dp°C)	
Helium Monitoring	0.00-25% Helium in Nitrogen or Argon environment	
Utilities		
Electrical	3-phase, 5-wire, 30 Amp, 50/60 Hz 208-240VAC or 380-415VAC	
Inputs		
Environmental Gas	60psi (415kPa) 200 SCFH (5.6 m³/h) minimum	
Automatic Door Gas	80psi (550kPa) 200 SCFH (5.6 m³/h) minimum	
Chilled Water (Oven Flange Cooling)	20-27°C, 0.5L/min minimum flow or optional integrated water recirculator	
Gas Purification		
Single Column Manual	30 CFM (51 m³/hr)	
Dual Column Manual	Moisture and/or oxygen removal	
Dual Column Automatic	1.0 PPM Oxygen	
Gas Mixers		
Manual Set Control	Two and three gas versions	
Automatic Closed Loop Control	Two and three gas versions	
Others		
Soot Removal Systems	2 micron 30 CFM (51 m³/hr) or 100 CFM (170 m³/hr)	
CDRH Class 1 Eyesafe Window	Wavelength based on application	
Light Tower	Indicates glovebox process status	
Tool Interchange	Floor access, front loading	
Safety	Light curtain, interlocks	

Standard Configurations

Enclosure Length:	48" (1219 mm)	56" (1423 mm)
Enclosure Depth (Floor):	39" (991 mm)	39" (991 mm)
Enclosure Depth (Top):	29" (737 mm)	29" (737 mm)
Enclosure Height:	36" (915 mm)	36" (915 mm)
Glove Ports:	2	4

Other configurations and custom sizes available

Specifications are subject to change without notice.



Automatic sliding inner doors



1820 S. Myrtle Ave. • P.O. Box 5033  
 Monrovia, CA 91017-7133 US • T: (626) 303-5676 • F: (626) 358-8048  
 info@muc.miyachi.com • www.miyachiunitek.com  
 ISO 9001 Certified Company • 24/7 Repair Service: 1-866-751-7378



**Miyachi Unitek Midwest Sales Office:**  
 50384 Dennis Ct., Wixom, MI 48393  
 T: 248 313 3078 • F: 248 313 3031  
 midwestsales@muc.miyachi.com

**Miyachi Unitek Mexico Sales Office:**  
 5959 Gateway West, Ste 327, El Paso, TX 79925  
 T: (915) 881-8765  
 mxsales@muc.miyachi.com

**Miyachi Unitek North Asia Sales Office:**  
 Unit D, 20/F, Infotech Centre, 21 Hung To Road  
 Kwun Tong, HK • T: +852 2833-6998  
 F: +852 2833-6672 • asiapacific@muc.miyachi.com

**Miyachi Unitek South Asia Sales Office:**  
 No 26, Sin Ming Lane, #04-125,  
 Midview City, 573971, SG  
 T: +65 96318407 • southasia@muc.miyachi.com

**Miyachi Japan**  
 2-6-6 Motoasakusa Taito, Tokyo, 111-0041, JP  
 T:+81-3-5246-6700 • F:+81-3-5246-6890

**Miyachi China**  
 Room 01, 15th Floor, SML Center, No.610 Xujiahui  
 Road, Huangpu District, Shanghai 200025, CN  
 T:+86-21-6448-6000 • F:+86-21-6448-6550

**Miyachi Europe**  
 Lindberghstrasse 1 • DE-82178 Puchheim  
 T: +49 (0) 89 83 94 030 • F: +49 (0) 89 83 94 0310

**Miyachi Brazil:**  
 Av. Ceci, 608 – Bloco 16B – Empresarial Tambores,  
 06460-120, Barueri, SP, BR  
 T: +55 (11) 4193-1187

follow us on:



Specifications subject to change without notice. Copyright© 2013 Miyachi Unitek Corporation. The material contained herein cannot be reproduced or used in any other way without the express written permission of Miyachi Unitek Corporation. All rights reserved.

Your Local Miyachi Unitek Representative: