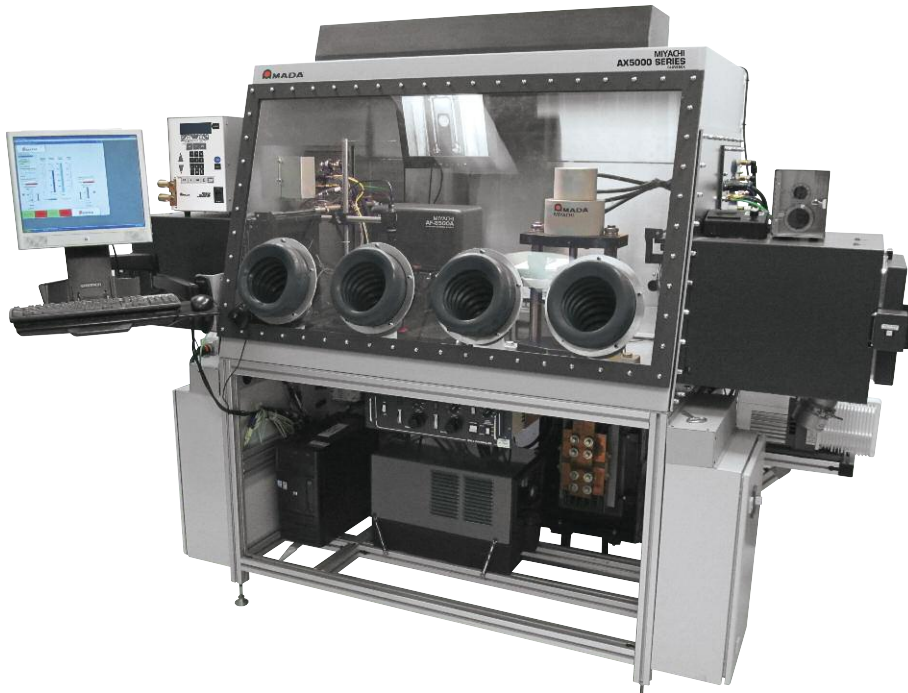


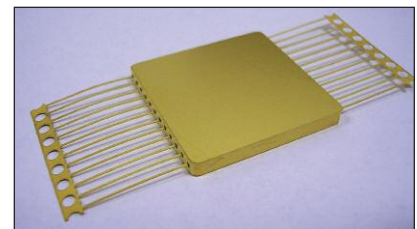
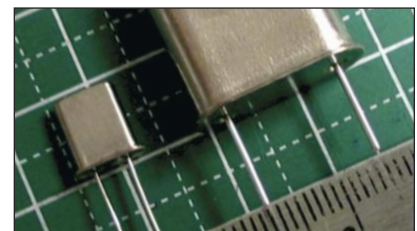
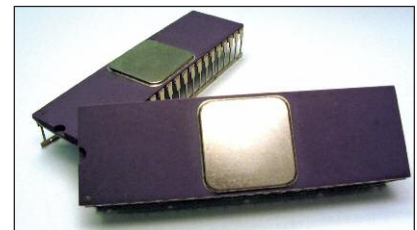
# AX5000

## Glovebox Welding System



AX5000 is an ideal **glovebox** for the precise control of moisture, pressure and gas composition of a processing environment. It provides fully-integrated computer control of the system including enclosure pressure, interior and exterior doors, gas and moisture analysis and control instrumentation, vacuum ovens, and antechambers. The glovebox can maintain an inert environment with ultra-low moisture and oxygen levels to meet the most demanding process standards.

### TYPICAL APPLICATIONS



### KEY FEATURES

- Historical and real time graphical display of operating parameters, atmospheric conditions, status, data acquisition and oven bakeout batch reports
- Independent vacuum pumping systems dedicated to automatically and completely evacuating designated chambers
- Wide variety of vacuum oven configurations with exclusive closed-loop computer control and monitoring of each oven surface including heated shelves, ensures temperature stability
- Automatic push button inner and outer doors on ovens and antechambers
- Fully-integrated electronic gas pressure control system with user-selectable set points and oil-less check valve
- Integrated moisture, oxygen and helium gas analyzers with real-time environmental control. Set points can be selected to trigger alarms or inhibit processes. Digital output provided for interface to process equipment

## TECHNICAL SPECIFICATIONS

Antechambers and Ovens	Features
Configuration options	End, front, rear loading
Heating	Wall heating or heated shelves
Temperature	0 - 200° C std., higher available
Vacuum pumps	Rotary vane, dry, or turbo pumps
<b>Analysis and Monitoring Capabilities</b>	
Trace oxygen detection range	0.0 - 1000 PPM
% Oxygen detection range	0.00 - 25.00%
Moisture detection range	GUI display -20.00 to -100 dewpoint° C or 0.00-1000 PPM (sensor range +20.00 to -100 dp° C)
Helium monitoring	0.00 - 25% helium in nitrogen or argon environment
<b>Utilities</b>	
Electrical	3-phase, 5-wire, 30 A, 50/60 Hz 208-240 VAC or 380-415 VAC
<b>Inputs</b>	
Environmental gas	60 psi (415kPa) 200 SCFH (5.6 m3/h) minimum
Automatic door gas	80 psi (550kPa) 200 SCFH (5.6 m3/h) minimum
Chilled water (oven flange cooling)	20 - 27° C, 0.5 L/min minimum flow or optional integrated water recirculator
<b>Gas Purification</b>	
Single column manual	30 CFM (51 m3/hr) Moisture and/or oxygen removal 1.0 PPM Oxygen
Dual column manual	
Dual column automatic	
<b>Gas Mixers</b>	
Manual set control	Two and three gas versions
Automatic closed loop control	Two and three gas versions
<b>Others</b>	
Soot removal systems	2 micron 30 CFM (51 m3/hr) or 100 CFM (170 m3/hr)
CDRH class 1 eyesafe window	Wavelength based on application
Light tower	Indicates glovebox process status
Tool interchange	Floor access, front loading
Safety	Light curtain, interlocks

## WEIGHT &amp; DIMENSIONS

	AX5000 - 48	AX5000 - 56
Dimensions (L x W x H)	39 in x 48 in x 36 in (991 mm x 1219 mm x 915 mm)	39 in x 56 in x 36 in (991 mm x 1423 mm x 915 mm)
Number of glove ports	2	4
Weight	Will vary with selected options	Will vary with selected options

Other configurations and custom sizes available

Specifications are subject to change without notice.



## AMADA WELD TECH INC.

1820 S. Myrtle Ave. • Monrovia, CA 91016 US  
T: (626) 303-5676  
info@amadaweldtech.com • www.amadaweldtech.com  
ISO 9001 Certified Company • 24/7 Repair Service: 1-866-751-7378

## AMERICAS

**AMADA WELD TECH**  
(Midwest Technical Center)  
Detroit, Michigan  
T: (248) 313-3078  
midwestsales@amadaweldtech.com

**AMADA WELD TECH DO**  
LTD.  
São Paulo, Brasil  
T: +55-11-4193-3607  
antonio.ruiz@amadaweldtech.com

## EUROPE

**AMADA WELD TECH**  
GmbH  
Munich, Germany  
T: +49-89-839403-0  
infode@amadaweldtech.eu

## ASIA

**AMADA WELD**  
**TECH CO., LTD.**  
Isehara, Japan  
T: +81-4-7125-6177  
sales@miyachi.com

**AMADA WELD TECH**  
**KOREA CO., LTD.**  
Seoul, Korea  
T: +82-31-8015-6810  
sales@amadaweldtech.co.kr

**AMADA**  
**(THAILAND) CO., LTD.**  
Bangkok, Thailand  
T: +66-2170-5900  
info@amada.co.th

**AMADA WELD TECH**  
**INDIA PVT., LTD.**  
Bangalore, India  
T: +91-80-4092-1749  
info@miyachiindia.com

**AMADA WELD TECH**  
(Mexico Office)  
El Paso, Texas  
T: (915) 881-8765  
mxsales@amadaweldtech.com

**AMADA WELD TECH**  
**SHANGHAI CO., LTD.**  
Shanghai, China  
T: +86-21-6448-6000  
jwu@msc.miyachi.com

**AMADA WELD TECH**  
**TAIWAN CO., LTD.**  
Taipei, Taiwan  
T: +886-2-2585-0161

**AMADA**  
**VIETNAM CO., LTD.**  
Ha Noi, Vietnam  
T: +84-4-6261-4583

Specifications subject to change without notice. Copyright© 2020 AMADA WELD TECH INC. The material contained herein cannot be reproduced or used in any other way without the express written permission of AMADA WELD TECH INC. All rights reserved.

follow us on:

