



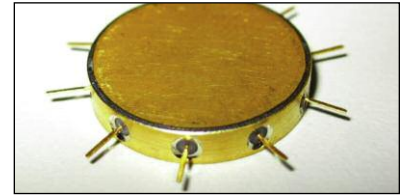
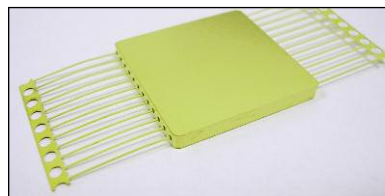
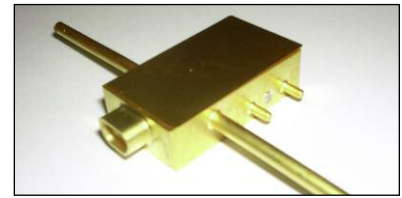
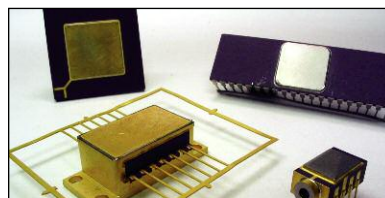
BENCHMARK[®] SM-8500A Parallel Seam Sealing System

Packed with advanced features, the Windows[®]-based SM-8500A parallel seam sealing system, reliably performs welding, brazing and soldering processes on a variety of metals, metal alloys, plated materials, and solder pre-forms. It can be operated as a stand-alone unit or fully integrated into an environmental enclosure for a complete closed loop hermetic sealing process.

KEY FEATURES

- Utilizes the advanced HF-2500A 25 kHz closed-loop feedback weld power supply
- Programmable electrode force enables user to optimize both force and energy
- Indexed electrodes ensure extended, even wear providing superior results
- Position-based weld pulses provide increased or decreased energy at part corners reducing corner leaks
- Electrode roll-back feature facilitates electrode release from light weight parts
- Circular mode seam sealing allows processing of round parts

TYPICAL APPLICATIONS





WIDE RANGE OF PART PROCESSING CAPABILITIES

- Operates as tacker only, sealer only, or combined tacker-sealer
- Four-pass welding feature starts weld from center and welds to the part corner – for large part sealing
- Set different energy levels for each axis welded for higher yields on rectangular parts
- Many tacking options – tack center, four-side tacking, multiple tacking
- Real time monitoring of weld inhibit inputs such as moisture, oxygen, and helium levels
- Unlimited weld schedule storage
- Lid hold down feature assists tacking process
- Multiple weld schedule chaining feature
- Optional CCTV camera available to assist the operator for improved lid placement
- Batch reporting option

TECHNICAL SPECIFICATIONS

Part size	0.158 in to 8 in (4 mm to 203 mm)	
Position encoder resolution	X – 20,000 cts/in,	
Position encoder resolution	Y – 40,000 cts/in	
Weld force (programmable)	500 to 5000 grams	
Linear weld speed	0.01 to 1.5 in/sec	
Rotary weld speed	0.01 to 1.5 linear- in/sec (720° max. rotation)	
Input gas requirements	60 psi minimum	
Input power – HF-2500A power supply	Three phase, 192-264 VAC (240 V nominal), 50/60 Hz, 25 A Three phase, 320-440 VAC (400 V nominal), 50/60 Hz, 20 A Three phase, 384-528 VAC (480 V nominal), 50/60 Hz, 13 A	
HF-2500A current output	100 to 2400 A, ± 2 A	
HF25 pulse width	0.10 to 99.00 ms	
Mechanism input power	Single phase, autovolt 110 to 240 VAC 50/60 Hz, 15 A	
Calibration	To NIST standards	CE Certified

WEIGHT & DIMENSIONS

	SM-8500A Mechanism	HF-2500A Power Supply
Dimensions (L x W x H)	23.0 in x 22.0 in x 18 in (584 mm x 559 mm x 470 mm)	16.25 in x 9.25 in x 13.0 in (413 mm x 235 mm x 330 mm)
Weight	85 lb (38.5 kg)	54 lb (24.5 kg)



AMADA WELD TECH INC.

1820 S. Myrtle Ave. • Monrovia, CA 91016 US
T: (626) 303-5676
info@amadaweldtech.com • www.amadaweldtech.com
ISO 9001 Certified Company • 24/7 Repair Service: 1-866-751-7378

AMERICAS

AMADA WELD TECH
(Midwest Technical Center)
Detroit, Michigan
T: (248) 313-3078
midwestsales@amadaweldtech.com

AMADA WELD TECH DO
LTD.
São Paulo, Brasil
T: +55-11-4193-3607
antonio.ruiz@amadaweldtech.com

EUROPE

AMADA WELD TECH
GmbH
Munich, Germany
T: +49-89-839403-0
infode@amadaweldtech.eu

ASIA

AMADA WELD
TECH CO., LTD.
Isehara, Japan
T: +81-4-7125-6177
sales@miyachi.com

AMADA WELD TECH
KOREA CO., LTD.
Seoul, Korea
T: +82-31-8015-6810
sales@amadaweldtech.co.kr

AMADA
(THAILAND) CO., LTD.
Bangkok, Thailand
T: +66-2170-5900
info@amada.co.th

AMADA WELD TECH
INDIA PVT., LTD.
Bangalore, India
T: +91-80-4092-1749
info@miyachiindia.com

AMADA WELD TECH
(Mexico Office)
El Paso, Texas
T: (915) 881-8765
mxsales@amadaweldtech.com

AMADA WELD TECH
SHANGHAI CO., LTD.
Shanghai, China
T: +86-21-6448-6000
jwu@msc.miyachi.com

AMADA WELD TECH
TAIWAN CO., LTD.
Taipei, Taiwan
T: +886-2-2585-0161

AMADA
VIETNAM CO., LTD.
Ha Noi, Vietnam
T: +84-4-6261-4583

Specifications subject to change without notice. Copyright© 2020 AMADA WELD TECH INC. The material contained herein cannot be reproduced or used in any other way without the express written permission of AMADA WELD TECH INC. All rights reserved.

follow us on:

